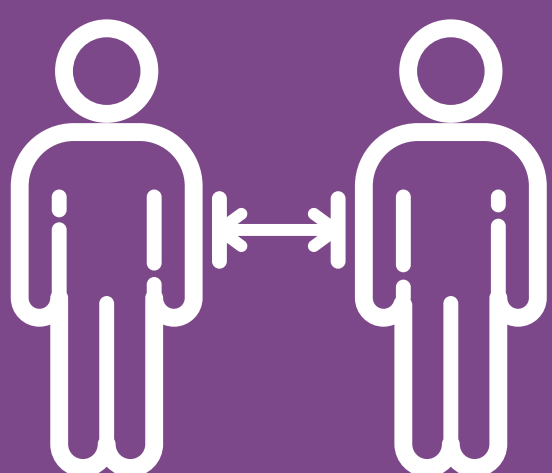




totalmaths
tutoring
ASPIRE · ACHIEVE

www.totalmathstutoring.com

QUICK GUIDE TO COVID SAFE SESSIONS



Maintain a social distance

This should be 2m where possible but at least 1m+

Work side by side

Avoid face-to-face working when you can, especially for prolonged periods

Ensure good ventilation

Leave doors and windows open in the workspace. Consider an outside session if weather permits.

Students, tutors and parents should participate in regular hand washing or hand sanitising

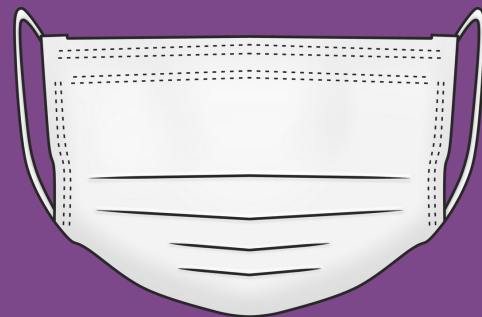
Parents should ensure that the workspace has been appropriately sanitised before the session

Students should have their own stationary, paper, calculator etc. to reduce the need to share equipment



Tutors should ensure that any teaching aids have been appropriately sanitised before the session

Facial coverings are not mandatory for home tuition under government guidance. However, an agreement should be made between Tutors, Parents and Students about the use of facial coverings that **everyone** is comfortable with.



Tutors should bring their own refreshments to sessions.

Parents, please do not be offended if they decline your offer of a cup of tea.

IF TUTORS, STUDENTS OR ANY OTHER PERSON IN THE HOME IS DISPLAYING SYMPTOMS, FACE-TO-FACE TUTORING MUST NOT GO AHEAD.

CHANTEL SHERIDAN
HEALTH AND SAFETY OFFICER



07522016463



chantelsheridan@totalmathstutoring.com

CRAIG PATTERSON
COMPANY DIRECTOR



07884296450



craigpatterson@totalmathstutoring.com